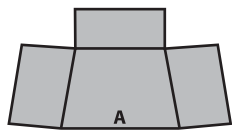
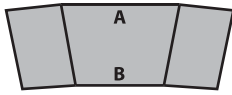


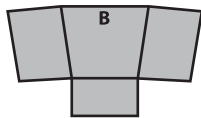
Includes:



Top Section



Middle Section



Bottom Section



2 chains



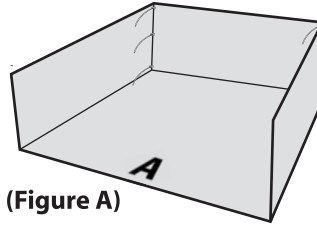
Iron Frame

59 Pieces
Plastic
Zip Ties

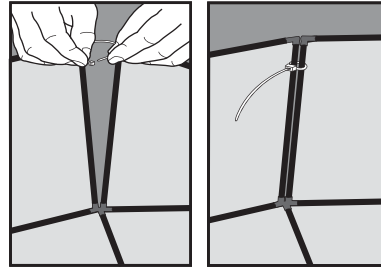


module

Step 1



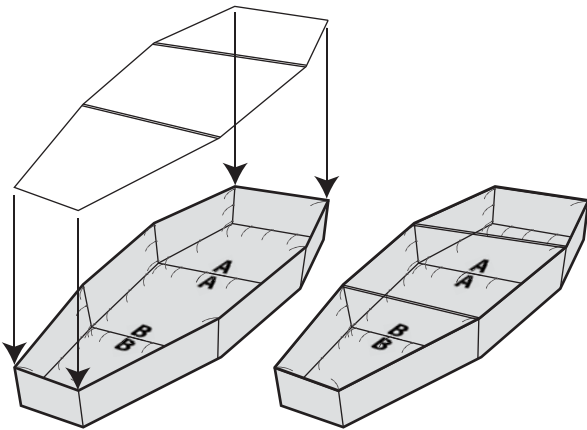
(Figure A)



(Figure B)

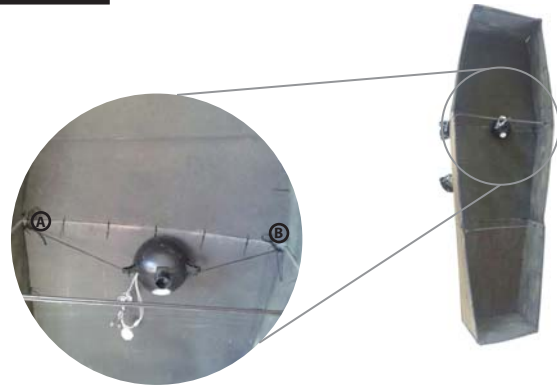
1. Lay each piece so that the smooth brown side is facing up.
2. Fold the Top Section sides up (**See figure A**) then slide the plastic zip ties through the holes and gently tighten. (**See figure B**)
3. Repeat above step for bottom section.
4. Once the Top & Bottom Sections are finished, use plastic zip ties to connect the center of the Middle Section to the Top & Bottom sections. (Match the "A" of the Middle Section to the "A" of the Top Section, and "B" of the Middle Section to the "B" of the Bottom Section.) Then fold the sides of the Middle section and connect to the sides of the Top & Bottom Sections. Your Coffin is almost done!

Step 2



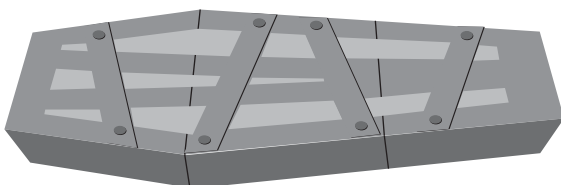
Attach the Iron Frame to the edges of your Coffin using plastic zip ties, beginning with the corners. (For greater stability, be certain that all of the holes meant for attaching the frame to your Coffin are used!)

Step 3



After the iron frame is attached to the coffin, fasten up the string of the module through the loop of the plastic zip tie on the left top of the middle section (See point A), then same goes with the right top (See point B). (For better stability, be sure the string is secured tightly)

Step 4



Gently flip the coffin over

Step 5



Apply the chain to the coffin with the plastic zip tie (For better shaking effects, it is recommended to leave a section of the chain hanging on the end per the photo).